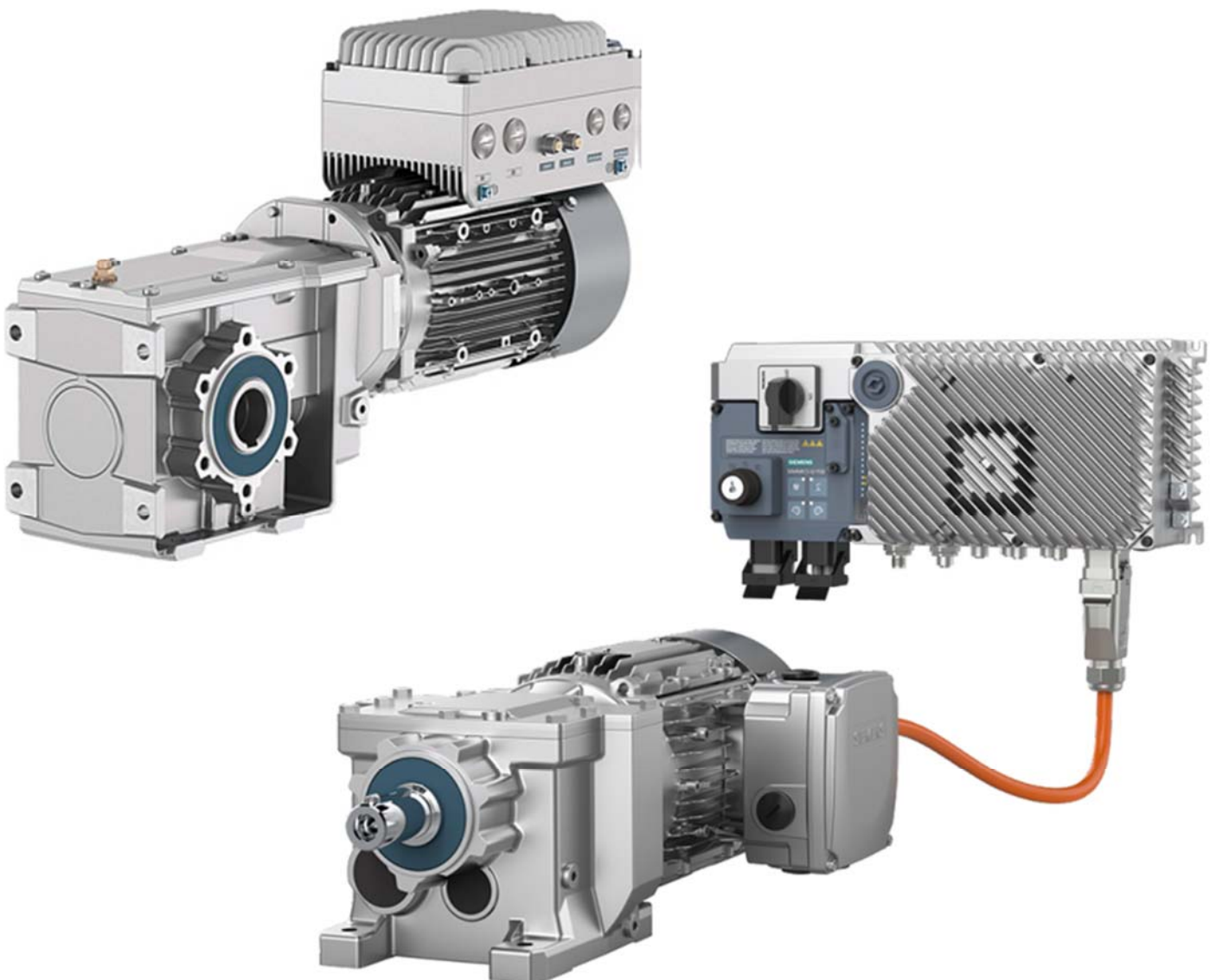




# SINAMICS G115D

## Supplementary products



# Table of Contents:

## **1 Power 400V**

1.1	Power box	4
1.2	Power supply cable Q4/2 one sided assembled	5
1.3	Power supply cable Q4/2 both sided assembled	7
1.4	Power supply cable Q4/2 branch Cable structure both sided assembled	10
1.5	Connector set Q4/2	11
1.6	Power supply cable MQ15 one sided assembled	13

## **2 Auxiliary power 24 V**

2.1	Power supply cable 7/8" one sided assembled	14
2.2	Power supply cable 7/8" both sided assembled	15
2.3	Connector 7/8"	16
2.4	Power supply cable M12 Power L-coded one sided assembled	17
2.5	Power supply cable M12 Power L-coded both sided assembled	18
2.6	Connector M12 Power L-coded	19

## **3 Communication**

3.1	Cable AS-Interface M12 branch Cable both sided assembled	20
-----	--	----

# Table of Contents:

## **4 Motor connection**

4.1	Motor connection cable Q8/0 one sided assembled for motors without brake and thermal sensor for motors with brake and thermal sensor	21
4.2	Motor connection cable Q8/0 to 10E both sided assembled Star connection; for motors with brake and thermal sensor Delta connection; for motors with brake and thermal sensor	25
4.3	Motor connection cable Q8/0 to Q12/0 both sided assembled Star connection; for motors with brake and thermal sensor Delta connection; for motors with brake and thermal sensor	29
4.4	Rotary field adapter	31
4.5	Connector sets Connector set Q8/0 Connector set 10E Connector set Q12	32

## **5 Encoder connection**

5.1	Encoder cable M12 to M23 HTL both sided assembled	35
5.2	Connector M12	36

# 1.1 Powerbox



Order number	Description			
	Powerbox, Contact unit for uncut power cables; IP65 housing complete with seals			
	Energy bus	Round Cable structure	Branch	Round Cable structure
ZKT:10035300	5 x 4 mm <sup>2</sup> 4 x 6 mm <sup>2</sup> 5 x 6 mm <sup>2</sup>	D = 15 bis 17 mm	5 x 4 mm <sup>2</sup> 4 x 6 mm <sup>2</sup> 5 x 6 mm <sup>2</sup>	D = 15 bis 17 mm
ZKT:10035310	5 x 4 mm <sup>2</sup> 4 x 4 mm <sup>2</sup>	D = 13 bis 15 mm	5 x 4 mm <sup>2</sup> 4 x 4 mm <sup>2</sup>	D = 13 bis 15 mm
ZKT:10035320	5 x 4 mm <sup>2</sup>	D = 15 bis 17 mm	5 x 2,5 mm <sup>2</sup> 4 x 2,5 mm <sup>2</sup>	D = 11 bis 13 mm
ZKT:10035330	5 x 4 mm <sup>2</sup> 4 x 6 mm <sup>2</sup> 5 x 6 mm <sup>2</sup>	D = 15 bis 17 mm	4 x 4 mm <sup>2</sup>	D = 13 bis 15 mm
ZKT:10035340	5 x 4 mm <sup>2</sup> 4 x 4 mm <sup>2</sup>	D = 13 bis 15 mm	5 x 2,5 mm <sup>2</sup> 4 x 2,5 mm <sup>2</sup>	D = 11 bis 13 mm
ZKT:10035350	5 x 2,5 mm <sup>2</sup> 4 x 2,5 mm <sup>2</sup>	D = 11 bis 13 mm	5 x 2,5 mm <sup>2</sup> 4 x 2,5 mm <sup>2</sup>	D = 11 bis 13 mm
	Energy bus	Round Cable structure	Branch	Round Cable structure
ZKT:10035360	5 x 6 mm <sup>2</sup>	7,5 x 26,5 mm	5 x 4 mm <sup>2</sup> 4 x 6 mm <sup>2</sup> 5 x 6 mm <sup>2</sup>	D = 15 bis 17 mm
ZKT:10035370	5 x 6 mm <sup>2</sup>	7,5 x 26,5 mm	5 x 4 mm <sup>2</sup> 4 x 4 mm <sup>2</sup>	D = 13 bis 15 mm

# 1.2 Power supply cable Q4/2 one sided assembled



**Description:**

400V Feed in  
one sided assembled

- Side 1: open end
- Side 2: Q4/2 Female straight outlet



**Technical data:**

<u>For standard applications</u>	<u>For high end applications</u>
Flame-retardant Silicone-free UV-resistant Largely Oil-resistant	Flame-retardant Silicone-free UV-resistant Oil-resistant Halogen-free Drag chain capable

Cable structure (mm <sup>2</sup> )	Cable length	Part no. for standard applications	Part no. for high end applications	
			UL-listed components	UL-applications
4 x 2,5	1,5 m	70056500000150	70056520000150	70056570000150
	3 m	70056500000300	70056520000300	70056570000300
	5 m	70056500000500	70056520000500	70056570000500
	10 m	70056500001000	70056520001000	70056570001000
	15 m	70056500001500	70056520001500	70056570001500
	Any length	7005650000xxxx	7005652000xxxx	7005657000xxxx
4 x 4	1,5 m	70056600000150	70056620000150	70056670000150
	3 m	70056600000300	70056620000300	70056670000300
	5 m	70056600000500	70056620000500	70056670000500
	10 m	70056600001000	70056620001000	70056670001000
	15 m	70056600001500	70056620001500	70056670001500
	Any length	7005660000xxxx	7005662000xxxx	7005667000xxxx
4 x 6	1,5 m	70056700000150	70056720000150	70056770000150
	3 m	70056700000300	70056720000300	70056770000300
	5 m	70056700000500	70056720000500	70056770000500
	10 m	70056700001000	70056720001000	70056770001000
	15 m	70056700001500	70056720001500	70056770001500
	Any length	7005670000xxxx	7005672000xxxx	7005677000xxxx

# 1.2 Power supply cable Q4/2 one sided assembled



### Description:

400V Feed in  
one sided assembled

- Side1: open end
- Side2: Q4/2 Female angled outlet



### Technical data:

<u>For standard applications</u>	<u>For high end applications</u>
Flame-retardant Silicone-free UV-resistant Largely Oil-resistant	Flame-retardant Silicone-free UV-resistant Oil-resistant Halogen-free Drag chain capable

Cable structure (mm <sup>2</sup> )	Cable length	Part no. for standard applications	Part no. for high end applications	
			UL listed components	UL-applications
4 x 2,5	1,5 m	7001370000150	70013720000150	70013770000150
	3 m	70013700000300	70013720000300	70013770000300
	5 m	70013700000500	70013720000500	70013770000500
	10 m	70013700001000	70013720001000	70013770001000
	15 m	70013700001500	70013720001500	70013770001500
	Any length	7001370000xxxx	7001372000xxxx	7001377000xxxx
4 x 4	1,5 m	70013800000150	70013820000150	70013870000150
	3 m	70013800000300	70013820000300	70013870000300
	5 m	70013800000500	70013820000500	70013870000500
	10 m	70013800001000	70013820001000	70013870001000
	15 m	70013800001500	70013820001500	70013870001500
	Any length	7001380000xxxx	7001382000xxxx	7001387000xxxx
4 x 6	1,5 m	70013200000150	70013220000150	70013270000150
	3 m	70013200000300	70013220000300	70013270000300
	5 m	70013200000500	70013220000500	70013270000500
	10 m	70013200001000	70013220001000	70013270001000
	15 m	70013200001500	70013220001500	70013270001500
	Any length	7001320000xxxx	7001322000xxxx	7001327000xxxx

# 1.3 Power supply cable Q4/2 both sided assembled




Description:  
400V forwarding  
both sided assembled

- Side1: Q4/2 Male straight outlet
- Side2: Q4/2 Female straight outlet



### Technical data:

<u>For standard applications</u>	<u>For high end applications</u>
Flame-retardant Silicone-free UV-resistant Largely Oil-resistant	Flame-retardant Silicone-free UV-resistant Oil-resistant Halogen-free Drag chain capable

Cable structure (mm <sup>2</sup> )	Cable length	Part no. for standard applications	Part no. . For high end applications	
			UL-listed components	UL-applications 
4 x 2,5	1,5 m	7005680000150	70056820000150	70056870000150
	3 m	7005680000300	70056820000300	70056870000300
	5 m	7005680000500	70056820000500	70056870000500
	10 m	70056800001000	70056820001000	70056870001000
	15 m	70056800001500	70056820001500	70056870001500
	Any length	7005680000xxxx	7005682000xxxx	7005687000xxxx
4 x 4	1,5 m	70056900000150	70056920000150	70056970000150
	3 m	70056900000300	70056920000300	70056970000300
	5 m	70056900000500	70056920000500	70056970000500
	10 m	70056900001000	70056920001000	70056970001000
	15 m	70056900001500	70056920001500	70056970001500
	Any length	7005690000xxxx	7005692000xxxx	7005697000xxxx
4 x 6	1,5 m	70057000000150	70057020000150	70057070000150
	3 m	70057000000300	70057020000300	70057070000300
	5 m	70057000000500	70057020000500	70057070000500
	10 m	70057000001000	70057020001000	70057070001000
	15 m	70057000001500	70057020001500	70057070001500
	Any length	7005700000xxxx	7005702000xxxx	7005707000xxxx



# 1.3 Power supply cable Q4/2 both sided assembled



**Description:**


400V Forwarding  
both sided assembled

- Side1: Q4/2 Male angled outlet
- Side2: Q4/2 Female angled outlet



**Technical data:**

<u>For standard applications</u>	<u>For high end applications</u>
Flame-retardant Silicone-free UV-resistant Largely Oil-resistant	Flame-retardant Silicone-free UV-resistant Oil-resistant Halogen-free Drag chain capable

Cable structure (mm <sup>2</sup> )	Cable length	Part no. for standard Applications	Part no. . For high end applications	
			UL-listed components	UL-applications 
4 x 2,5	1,5 m	70015100000150	70015120000150	70015170000150
	3 m	70015100000300	70015120000300	70015170000300
	5 m	70015100000500	70015120000500	70015170000500
	10 m	70015100001000	70015120001000	70015170001000
	15 m	70015100001500	70015120001500	70015170001500
	Any length	7001510000xxxx	7001512000xxxx	7001517000xxxx
4 x 4	1,5 m	70015200000150	70015220000150	70015270000150
	3 m	70015200000300	70015220000300	70015270000300
	5 m	70015200000500	70015220000500	70015270000500
	10 m	70015200001000	70015220001000	70015270001000
	15 m	70015200001500	70015220001500	70015270001500
	Any length	7001520000xxxx	7001522000xxxx	7001527000xxxx
4 x 6	1,5 m	70013100000150	70013120000150	70013170000150
	3 m	70013100000300	70013120000300	70013170000300
	5 m	70013100000500	70013120000500	70013170000500
	10 m	70013100001000	70013120001000	70013170001000
	15 m	70013100001500	70013120001500	70013170001500
	Any length	7001310000xxxx	7001312000xxxx	7001317000xxxx



# 1.3 Power supply cable Q4/2 both sided assembled



**Description:**

400V Forwarding  
double-sided confection


- Side1: Q4/2 Male angled outlet
- Side2: Q4/2 Female, rotated, angled outlet

For forwarding to an ET200 station with RSM



**Technical data:**

<u>For standard applications</u>	<u>For high end applications</u>
Flame-retardant Silicone-free UV-resistant Largely Oil-resistant	Flame-retardant Silicone-free UV-resistant Oil-resistant Halogen-free Drag chain capable

Cable structure (mm <sup>2</sup> )	Cable length	Part no. for standard Applications	Part no. . For high end applications	
			UL-listed components	UL-applications 
4 x 6	1,5 m	70013000000150	70013020000150	70013070000150
	3 m	70013000000300	70013020000300	70013070000300
	5 m	70013000000500	70013020000500	70013070000500
	10 m	70013000001000	70013020001000	70013070001000
	15 m	70013000001500	70013020001500	70013070001500
	Any length	7001300000xxxx	7001302000xxxx	7001307000xxxx

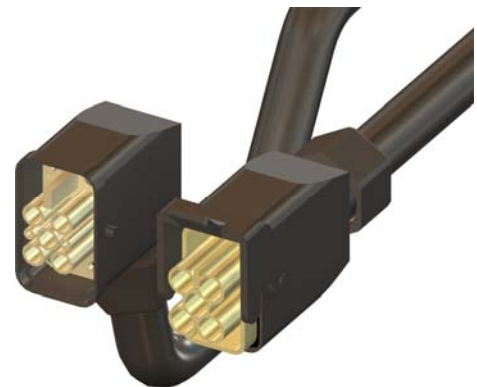
# 1.4 Power supply cable Q4/2 both sided assembled



### Description:


400V Branch Cable  
both-sided assembled

- Side1: Q4/2 Male in coupling housing straight outlet
- Side2: Q4/2 Female angled outlet



### Technical data:

<u>For standard applications</u>	<u>For high end applications</u>
Flame-retardant Silicone-free UV-resistant Largely Oil-resistant	Flame-retardant Silicone-free UV-resistant Oil-resistant Halogen-free Drag chain capable

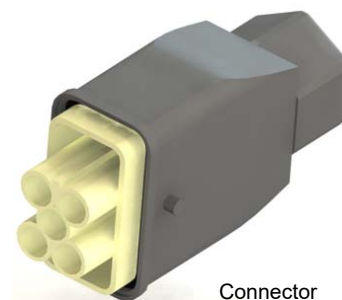
Cable structure (mm <sup>2</sup> )	Cable length	Part no. for standard Applications	Part no. . For high end applications	
			UL-listed components	UL-applications 
4 x 2,5	1,5 m	7000880000150	70008820000150	70008870000150
	3 m	7000880000300	70008820000300	70008870000300
	5 m	7000880000500	70008820000500	70008870000500
	10 m	70008800001000	70008820001000	70008870001000
	15 m	70008800001500	70008820001500	70008870001500
	Any length	7000880000xxxx	7000882000xxxx	7000887000xxxx
4 x 4	1,5 m	70008900000150	70008920000150	70008970000150
	3 m	70008900000300	70008920000300	70008970000300
	5 m	70008900000500	70008920000500	70008970000500
	10 m	70008900001000	70008920001000	70008970001000
	15 m	70008900001500	70008920001500	70008970001500
	Any length	7000890000xxxx	7000892000xxxx	7000897000xxxx
4 x 6	1,5 m	70013600000150	70013620000150	70013670000150
	3 m	70013600000300	70013620000300	70013670000300
	5 m	70013600000500	70013620000500	70013670000500
	10 m	70013600001000	70013620001000	70013670001000
	15 m	70013600001500	70013620001500	70013670001500
	Any length	7001360000xxxx	7001362000xxxx	7001367000xxxx

# 1.5 Connector set Q4/2



## Description:

Connector set  
consisting of:  
Grommet housing, plastic, straight cable outlet  
Cable gland  
Contact insert Q4/2  
4 pieces crimp contacts



Connector



Female

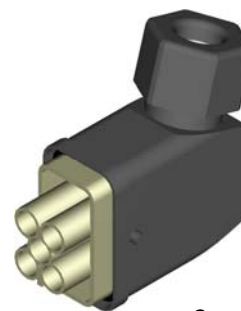
Wire cross-section (mm <sup>2</sup> )	Note	Part no.
2,5 4 6	400V Forwarding Connector	10066700 10066710 10066720
2,5 4 6	400V Feed Female	10066800 10066810 10066820

# 1.5 Connector set Q4/2

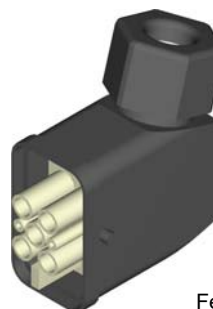


## Description:

Connector consisting of:  
Grommet housing, plastic,  
angled cable outlet  
Cable gland  
Contact insert  
4 pieces crimp contacts



Connector



Female

Wire cross-section (mm <sup>2</sup> )	Note	Part no.
2,5 4 6	400V Forwarding Connector	10031110 10017510 10017610
2,5 4 6	400V Feed Female	10031010 10018110 10018210

# 1.6 Power supply cable MQ15 one side assembled



**Description:**

400V Feed  
One side assembled


Cable structure structure:

- Side1: open end
- Side2: MQ15 Female straight outlet



**Technical data:**

<u>For standard applications</u>	<u>For high end applications</u>
Flame-retardant Silicone-free UV-resistant Largely Oil-resistant	Flame-retardant Silicone-free UV-resistant Oil-resistant Halogen-free Drag chain capable

Cable structure (mm <sup>2</sup> )	Cable length	Part no. for standard Applications	Part no. . For high end applications	
			UL-listed components	UL-applications 
4 x 2,5	1,5 m	70057100000150	70057120000150	70057170000150
	3 m	70057100000300	70057120000300	70057170000300
	5 m	70057100000500	70057120000500	70057170000500
	10 m	70057100001000	70057120001000	70057170001000
	15 m	70057100001500	70057120001500	70057170001500
	Any length	7005710000xxxx	7005712000xxxx	7005717000xxxx

Aut Anfrage

## 2.1 Power supply cable 7/8" one sided assembled



### Description:

24V Feed  
One sided assembled


### Cable structure structure:

- Side1: open end
- Side2: 7/8" Female straight outlet



### Technical data:

<u>For standard applications</u>	<u>For high end applications</u>
Flame-retardant Silicone-free UV-resistant Largely Oil-resistant	Flame-retardant Silicone-free UV-resistant Oil-resistant Halogen-free Drag chain capable

Cable structure (mm <sup>2</sup> )	Cable length	Part no. for standard Applications	Part no. . For high end applications	
			UL-listed components	UL-applications 
5 x 2,5	1,5 m	70057300000150	70057320000150	70057370000150
	3 m	70057300000300	70057320000300	70057370000300
	5 m	70057300000500	70057320000500	70057370000500
	10 m	70057300001000	70057320001000	70057370001000
	15 m	70057300001500	70057320001500	70057370001500
	Any length	7005730000xxxx	7005732000xxxx	7005737000xxxx

## 2.2 Power supply cable 7/8" both sided assembled



### Description:

24V Forwarding  
Double-sided confection


### Cable structure structure:

- Side1: 7/8" Male straight outlet
- Side2: 7/8" Female straight outlet



### Technical data:

<u>For standard applications</u>	<u>For high end applications</u>
Flame-retardant Silicone-free UV-resistant Largely Oil-resistant	Flame-retardant Silicone-free UV-resistant Oil-resistant Halogen-free Drag chain capable

Cable structure (mm <sup>2</sup> )	Cable length	Part no. for standard Applications	Part no. . For high end applications	
			UL-listed components	UL-applications 
5 x 2,5	1,5 m	70057400000150	70057420000150	70057470000150
	3 m	70057400000300	70057420000300	70057470000300
	5 m	70057400000500	70057420000500	70057470000500
	10 m	70057400001000	70057420001000	70057470001000
	15 m	70057400001500	70057420001500	70057470001500
	Any length	7005740000xxxx	7005742000xxxx	7005747000xxxx



## 2.3 Connector 7/8"



**Description:**  
24V connection  
Termination: Screw



Connector



Female

Wire cross-section (mm <sup>2</sup> )	Note	Part no.
1,5 2,5	24V Forwarding Connector	30023500 30023502
1,5 2,5	24V Feed Female	30023600 30023602

## 2.4 Power supply cable M12 Power L-coded one sided assembled



### Description:

24V Feed  
One side assembled


### Cable structure structure:

- Side1: open end
- Side2:M12 Power L-coded Female straight outlet



### Technical data:

<u>For standard applications</u>	<u>For high end applications</u>
Flame-retardant Silicone-free UV-resistant Largely Oil-resistant	Flame-retardant Silicone-free UV-resistant Oil-resistant Halogen-free Drag chain capable

Cable structure (mm <sup>2</sup> )	Cable length	Part no. for standard Applications	Part no. . For high end applications	
			UL-listed components	UL-applications 
5 x 2,5	1,5 m	70057500000150	70057520000150	70057570000150
	3 m	70057500000300	70057520000300	70057570000300
	5 m	70057500000500	70057520000500	70057570000500
	10 m	70057500001000	70057520001000	70057570001000
	15 m	70057500001500	70057520001500	70057570001500
	Any length	7005750000xxxx	7005752000xxxx	7005757000xxxx

## 2.5 Power supply cable M12 Power L-coded both sided assembled



### Description:


24V Forwarding  
Both sided assembled

- Side1: M12 Power L-coded Male straight outlet
- Side2: M12 Power L-coded Female straight outlet



### Technical data:

<u>For standard applications</u>	<u>For high end applications</u>
Flame-retardant Silicone-free UV-resistant Largely Oil-resistant	Flame-retardant Silicone-free UV-resistant Oil-resistant Halogen-free Drag chain capable

Cable structure (mm <sup>2</sup> )	Cable length	Part no. for standard Applications	Part no. . For high end applications	
			UL-listed components	UL-applications 
5 x 2,5	1,5 m	70057600000150	70057620000150	70057670000150
	3 m	70057600000300	70057620000300	70057670000300
	5 m	70057600000500	70057620000500	70057670000500
	10 m	70057600001000	70057620001000	70057670001000
	15 m	70057600001500	70057620001500	70057670001500
	Any length	7005760000xxxx	7005762000xxxx	7005767000xxxx

## 2.6 Connector M12 Power L-coded



### Description:

24V Forwarding or 24V Feed in

Connector with plastic housing

Termination: Screw

Connection cross section: 2,5 mm<sup>2</sup> max



Male



Female

Wire cross-section (mm <sup>2</sup> )	Note	Part no.
2,5	24V Forwarding Connector, male	10066900
2,5	24V Feed in Connector, female	10067000

# 3.1 Cable AS-Interface M12 Branch cable



**Description:**

AS-I Branch  
Both sided assembled

- Side1: M12 A-coded Male straight outlet
- Side2: M12 A-coded Female straight outlet



**Technical data:**

	<b><u>For high end applications</u></b>
	Flame-retardant Silicone-free UV-resistant Oil-resistant Halogen-free Drag chain capable

Cable structure (mm <sup>2</sup> )	Cable length	Note	Part no. . For high end applications	
			UL-listed components	UL-applications
4 x 0,34	1 m	4pol. M12 Cable structure, A-coded, , double-sided confection, straight outlet	70057720000100	70057770000100
	2 m		70057720000200	70057720000200
4 x 0,75	1 m	4pol. M12 Cable structure, A-coded, double-sided confection, straight outlet	70057820000100	70057870000100
	2 m		70057820000200	70057870000200
	3 m		70057820000300	70057870000300
	5 m		70057820000500	70057870000500
	10 m		70057820001000	70057870001000
	15 m		70057820001500	70057870001500
	Any length		7005782000xxxx	7005787000xxxx

# 4.1 Motor connection cable Q8/0 one sided assembled



**Description:**

Motor connection cable  
One side assembled  
for motors without brake and thermal sensor

- Side1: Q8/0 Male EMC straight outlet
- Side2: open end



**Technical data:**

<b><u>For high end applications</u></b>
Flame-retardant Silicone-free UV-resistant Oil-resistant Halogen-free Drag chain capable

Cable structure (mm <sup>2</sup> )	Cable length	Part no. . For high end applications	
		UL-listed components	UL-applications
4 x 1,5 shielded	1,5 m	70057920000150	70057970000150
	3 m	70057920000300	70057970000300
	5 m	70057920000500	70057970000500
	10 m	70057920001000	70057970001000
	15 m	70057920001500	70057970001500
	Any length	7005792000xxxx	7005797000xxxx
4 x 2,5 shielded	1,5 m	70058020000150	70058070000150
	3 m	70058020000300	70058070000300
	5 m	70058020000500	70058070000500
	10 m	70058020001000	70058070001000
	15 m	70058020001500	70058070001500
	Any length	7005802000xxxx	7005807000xxxx
4 x 4 shielded	1,5 m	70058120000150	70058170000150
	3 m	70058120000300	70058170000300
	5 m	70058120000500	70058170000500
	10 m	70058120001000	70058170001000
	15 m	70058120001500	70058170001500
	Any length	7005812000xxxx	7005817000xxxx

# 4.1 Motor connection cable Q8/0 one sided assembled



**Description:**

Motor connection cable  
One side assembled  
for motors without brake and thermal sensor

- Side1: Q8/0 male EMC angled outlet
- Side2: open end



**Technical data:**

<b><u>For high end applications</u></b>
Flame-retardant Silicone-free UV-resistant Oil-resistant Halogen-free Drag chain capable

Cable structure (mm <sup>2</sup> )	Cable length	Part no. . For high end applications	
		UL-listed components	UL-applications
4 x 1,5 shielded	1,5 m	70049101000150	70049171000150
	3 m	70049101000300	70049171000300
	5 m	70049101000500	70049171000500
	10 m	70049101001000	70049171001000
	15 m	70049101001500	70049171001500
	Any length	7004910100xxxx	7004917100xxxx
4 x 2,5 shielded	1,5 m	70061601000150	70061671000150
	3 m	70061601000300	70061671000300
	5 m	70061601000500	70061671000500
	10 m	70061601001000	70061671001000
	15 m	70061601001500	70061671001500
	Any length	7006160100xxxx	7006167100xxxx
4 x 4 shielded	1,5 m	70061701000150	70061771000150
	3 m	70061701000300	70061771000300
	5 m	70061701000500	70061771000500
	10 m	70061701001000	70061771001000
	15 m	70061701001500	70061771001500
	Any length	7006170100xxxx	7006177100xxxx



# 4.1 Motor connection cable Q8/0 one sided assembled



**Description:**

Motor connection cable  
One side assembled  
For motors with brake and thermal sensor

Cable structure structure:

- Side1: Q8/0 male EMC straight outlet
- Side2: open end



**Technical data:**

<u>For high end applications</u>
Flame-retardant Silicone-free UV-resistant Oil-resistant Halogen-free Drag chain capable

Cable structure (mm <sup>2</sup> )	Cable length	Part no. . For high end applications	
		UL-listed components	UL-applications
4 x 1,5mm <sup>2</sup> + 2 x (2 x 0,75mm <sup>2</sup> ) shielded	1,5 m	70058220000150	70058270000150
	3 m	70058220000300	70058270000300
	5 m	70058220000500	70058270000500
	10 m	70058220001000	70058270001000
	15 m	70058220001500	70058270001500
	Any length	7005822000xxxx	7005827000xxxx
4 x 2,5mm <sup>2</sup> + 2 x (2 x 1mm <sup>2</sup> ) shielded	1,5 m	70058320000150	70058370000150
	3 m	70058320000300	70058370000300
	5 m	70058320000500	70058370000500
	10 m	70058320001000	70058370001000
	15 m	70058320001500	70058370001500
	Any length	7005832000xxxx	7005837000xxxx
4 x 4mm <sup>2</sup> + 2 x (2 x 1mm <sup>2</sup> ) shielded	1,5 m	70058420000150	70058470000150
	3 m	70058420000300	70058470000300
	5 m	70058420000500	70058470000500
	10 m	70058420001000	70058470001000
	15 m	70058420001500	70058470001500
	Any length	7005842000xxxx	7005847000xxxx

# 4.1 Motor connection cable Q8/0 one sided assembled



**Description:**

Motor connection cable  
One side assembled  
For motors with brake and thermal sensor

Cable structure structure:

- Side1: Q8/0 male EMC angled outlet
- Side2: open end



**Technical data:**

<u>For high end applications</u>
Flame-retardant Silicone-free UV-resistant Oil-resistant Halogen-free Drag chain capable

Cable structure (mm <sup>2</sup> )	Cable length	Part no. . For high end applications	
		UL-listed components	UL-applications
4 x 1,5mm <sup>2</sup> + 2 x (2 x 0,75mm <sup>2</sup> ) shielded	1,5 m	70020501000150	70020571000150
	3 m	70020501000300	70020571000300
	5 m	70020501000500	70020571000500
	10 m	70020501001000	70020571001000
	15 m	70020501001500	70020571001500
	Any length	7002050100xxxx	7002057100xxxx
4 x 2,5mm <sup>2</sup> + 2 x (2 x 1mm <sup>2</sup> ) shielded	1,5 m	70041801000150	70041871000150
	3 m	70041801000300	70041871000300
	5 m	70041801000500	70041871000500
	10 m	70041801001000	70041871001000
	15 m	70041801001500	70041871001500
	Any length	7004180100xxxx	7004187100xxxx
4 x 4mm <sup>2</sup> + 2 x (2 x 1mm <sup>2</sup> ) shielded	1,5 m	70017001000150	70017071000150
	3 m	70017001000300	70017071000300
	5 m	70017001000500	70017071000500
	10 m	70017001001000	70017071001000
	15 m	70017001001500	70017071001500
	Any length	7001700100xxxx	7001707100xxxx

## 4.2 Motor connection cable Q8/O to 10E both-sided assembled



### Description:

Motor connection cable  
Double-sided confection  
For motors with brake and thermal sensor

### Cable structure structure:


- Side1: Q8/O male EMC straight outlet
- Side2: 10E female EMC 1 bracket straight outlet  
integrated star bridge



### Technical data:

#### For high end applications

Flame-retardant  
Silicone-free  
UV-resistant  
Oil-resistant  
Halogen-free  
Drag chain capable

Cable structure (mm <sup>2</sup> )	Cable length	Part no. . For high end applications	
		UL-listed components	UL-applications 
4 x 1,5mm <sup>2</sup> + 2 x (2 x 0,75mm <sup>2</sup> ) shielded	1,5 m	70058520000150	70058570000150
	3 m	70058520000300	70058570000300
	5 m	70058520000500	70058570000500
	10 m	70058520001000	70058570001000
	15 m	70058520001500	70058570001500
	Any length	7005852000xxxx	7005857000xxxx
4 x 2,5mm <sup>2</sup> + 2 x (2 x 1mm <sup>2</sup> ) shielded	1,5 m	70058620000150	70058670000150
	3 m	70058620000300	70058670000300
	5 m	70058620000500	70058670000500
	10 m	70058620001000	70058670001000
	15 m	70058620001500	70058670001500
	Any length	7005862000xxxx	7005867000xxxx
4 x 4mm <sup>2</sup> + 2 x (2 x 1mm <sup>2</sup> ) shielded	1,5 m	70058720000150	70058770000150
	3 m	70058720000300	70058770000300
	5 m	70058720000500	70058770000500
	10 m	70058720001000	70058770001000
	15 m	70058720001500	70058770001500
	Any length	7005872000xxxx	7005877000xxxx

## 4.2 Motor connection cable Q8/O to 10E both sided assembled



### Description:

Motor connection cable  
Both sided assembled  
For motors with brake and thermal sensor


- Side1: Q8/O male EMC angled outlet
- Side2: 10E female EMC 1 Bracket Female straight outlet integrated star bridge



### Technical data:

#### For high end applications

Flame-retardant  
Silicone-free  
UV-resistant  
Oil-resistant  
Halogen-free  
Drag chain capable

Cable structure (mm <sup>2</sup> )	Cable length	Part no. . For high end applications	
		UL-listed components	UL-applications 
4 x 1,5mm <sup>2</sup> + 2 x (2 x 0,75mm <sup>2</sup> ) shielded	1,5 m	70018201000150	70018271000150
	3 m	70018201000300	70018271000300
	5 m	70018201000500	70018271000500
	10 m	70018201001000	70018271001000
	15 m	70018201001500	70018271001500
	Any length	7001820100xxxx	7001827100xxxx
4 x 2,5mm <sup>2</sup> + 2 x (2 x 1mm <sup>2</sup> ) shielded	1,5 m	70045401000150	70045471000150
	3 m	70045401000300	70045471000300
	5 m	70045401000500	70045471000500
	10 m	70045401001000	70045471001000
	15 m	70045401001500	70045471001500
	Any length	7004540100xxxx	7004547100xxxx
4 x 4mm <sup>2</sup> + 2 x (2 x 1mm <sup>2</sup> ) shielded	1,5 m	70016801000150	70016871000150
	3 m	70016801000300	70016871000300
	5 m	70016801000500	70016871000500
	10 m	70016801001000	70016871001000
	15 m	70016801001500	70016871001500
	Any length	7001680100xxxx	7001687100xxxx

## 4.2 Motor connection cable Q8/O to 10E both-sided assembled



### Description:

Motor connection cable  
Both sided assembled  
For motors with brake and thermal sensor


- Side1: Q8/O male EMC straight outlet
- Side2: 10E female EMC 1 Bracket straight outlet  
integrated triangular bridges



### Technical data:

#### For high end applications

Flame-retardant  
Silicone-free  
UV-resistant  
Oil-resistant  
Halogen-free  
Drag chain capable

Cable structure (mm <sup>2</sup> )	Cable length	Part no. . For high end applications	
		UL-listed components	UL-applications 
4 x 1,5mm <sup>2</sup> + 2 x (2 x 0,75mm <sup>2</sup> ) shielded	1,5 m	70058820000150	70058870000150
	3 m	70058820000300	70058870000300
	5 m	70058820000500	70058870000500
	10 m	70058820001000	70058870001000
	15 m	70058820001500	70058870001500
	Any length	7005882000xxxx	7005887000xxxx
4 x 2,5mm <sup>2</sup> + 2 x (2 x 1mm <sup>2</sup> ) shielded	1,5 m	70058920000150	70058970000150
	3 m	70058920000300	70058970000300
	5 m	70058920000500	70058970000500
	10 m	70058920001000	70058970001000
	15 m	70058920001500	70058970001500
	Any length	7005892000xxxx	7005897000xxxx
4 x 4mm <sup>2</sup> + 2 x (2 x 1mm <sup>2</sup> ) shielded	1,5 m	70059020000150	70059070000150
	3 m	70059020000300	70059070000300
	5 m	70059020000500	70059070000500
	10 m	70059020001000	70059070001000
	15 m	70059020001500	70059070001500
	Any length	7005902000xxxx	7005907000xxxx

## 4.2 Motor connection cable Q8/O to 10E both sided assembled



### Description:

Motor connection cable  
Both sided assembled  
For motors with brake and thermal sensor


- Side1: Q8/O male EMC angled outlet
- Side2: 10E female EMC 1 Bracket straight outlet integrated triangular bridges



### Technical data:

#### For high end applications

Flame-retardant  
Silicone-free  
UV-resistant  
Oil-resistant  
Halogen-free  
Drag chain capable

Cable structure (mm <sup>2</sup> )	Cable length	Part no. . For high end applications	
		UL-listed components	UL-applications 
4 x 1,5mm <sup>2</sup> + 2 x (2 x 0,75mm <sup>2</sup> ) shielded	1,5 m	70020401000150	70020471000150
	3 m	70020401000300	70020471000300
	5 m	70020401000500	70020471000500
	10 m	70020401001000	70020471001000
	15 m	70020401001500	70020471001500
	Any length	7002040100xxxx	7002047100xxxx
4 x 2,5mm <sup>2</sup> + 2 x (2 x 1mm <sup>2</sup> ) shielded	1,5 m	70046001000150	70046071000150
	3 m	70046001000300	70046071000300
	5 m	70046001000500	70046071000500
	10 m	70046001001000	70046071001000
	15 m	70046001001500	70046071001500
	Any length	7004600100xxxx	7004607100xxxx
4 x 4mm <sup>2</sup> + 2 x (2 x 1mm <sup>2</sup> ) shielded	1,5 m	70016901000150	70016971000150
	3 m	70016901000300	70016971000300
	5 m	70016901000500	70016971000500
	10 m	70016901001000	70016971001000
	15 m	70016901001500	70016971001500
	Any length	7001690100xxxx	7001697100xxxx

# 4.3 Motor connection cable Q8/0 to Q12/0 both-sided assembled



**Description:**

Motor connection cable  
Both sided assembled  
For motors with brake and thermal sensor


- Side1: Q8/0 male EMC straight outlet
- Side2: Q12/0 female EMC straight outlet integrated star bridge



**Technical data:**

**For high end applications**

Flame-retardant  
Silicone-free  
UV-resistant  
Oil-resistant  
Halogen-free  
Drag chain capable

Cable structure (mm <sup>2</sup> )	Cable length	Part no. . For high end applications	
		UL-listed components	UL-applications 
4 x 1,5mm <sup>2</sup> + 2 x (2 x 0,75mm <sup>2</sup> ) shielded	1,5 m	70059120000150	70059170000150
	3 m	70059120000300	70059170000300
	5 m	70059120000500	70059170000500
	10 m	70059120001000	70059170001000
	15 m	70059120001500	70059170001500
	Any length	7005912000xxxx	7005917000xxxx
4 x 2,5mm <sup>2</sup> + 2 x (2 x 1mm <sup>2</sup> ) shielded	1,5 m	70059420000150	70059470000150
	3 m	70059420000300	70059470000300
	5 m	70059420000500	70059470000500
	10 m	70059420001000	70059470001000
	15 m	70059420001500	70059470001500
	Any length	7005942000xxxx	7005947000xxxx



# 4.3 Motor connection cable Q8/0 to Q12/0 both sided assembled



**Description:**

Motor connection cable  
Both sided assembled  
For motors with brake and thermal sensor


- Side1: Q8/0 male EMC straight outlet
- Side2: Q12/0 female EMC straight outlet  
Integrated delta bridges



**Technical data:**

**For high end applications**

- Flame-retardant
- Silicone-free
- UV-resistant
- Oil-resistant
- Halogen-free
- Drag chain capable

Cable structure (mm <sup>2</sup> )	Cable length	Part no. . For high end applications	
		UL-listed components	UL-applications 
4 x 1,5mm <sup>2</sup> + 2 x (2 x 0,75mm <sup>2</sup> ) shielded	1,5 m	70059320000150	70059370000150
	3 m	70059320000300	70059370000300
	5 m	70059320000500	70059370000500
	10 m	70059320001000	70059370001000
	15 m	70059320001500	70059370001500
	Any length	7005932000xxxx	7005937000xxxx
4 x 2,5mm <sup>2</sup> + 2 x (2 x 1mm <sup>2</sup> ) shielded	1,5 m	70059520000150	70059570000150
	3 m	70059520000300	70059570000300
	5 m	70059520000500	70059570000500
	10 m	70059520001000	70059570001000
	15 m	70059520001500	70059570001500
	Any length	7005952000xxxx	7005957000xxxx

# 4.4 Rotary field adapter 10E to 10E



**Description:**

Rotary field adapter both sided assembled

Rotation field Left -> Right  
Rotation field Right -> Left

Cable structure structure:

- Side1: 10E male straight outlet
- Side2: 10E female straight outlet



**Technical data:**

<u>For standard applications</u>	<u>For high end applications</u>
Flame-retardant Silicone-free UV-resistant Largely Oil-resistant	Flame-retardant Silicone-free UV-resistant Oil-resistant Halogen-free Drag chain capable

Cable structure (mm <sup>2</sup> )	Cable length		Part no. . For high end applications	
			UL-listed components	UL-applications
4 x 2,5	0,5 m	Star	70050300000050	70050370000050
	Any length		7005030000xxxx	7005037000xxxx
4 x 4	0,5 m	Star	70061300000050	70061370000050
	Any length		7006130000xxxx	7006137000xxxx
4 x 2,5	0,5 m	Triangle	70061200000050	70061270000050
	Any length		7006120000xxxx	7006127000xxxx
4 x 4	0,5 m	Triangle	70061400000050	70061470000050
	Any length		7006140000xxxx	7006147000xxxx

## 4.5 Connector set Q8/0



### Description:

Motor connection plug  
Set consisting of

Metal grommet housing, EMC with straight cable outlet  
EMC gland  
Insulating body for pin contacts  
2x 4 crimp contacts



Cable structure (mm <sup>2</sup> )	Clamping range Cable gland	Part no.
4 x 1,5mm <sup>2</sup> + 4 x 0,75mm <sup>2</sup>	9 to 13 mm	10067200
4 x 2,5mm <sup>2</sup> + 4 x 1mm <sup>2</sup>	11 bis 15,5 mm	10067210
4 x 4mm <sup>2</sup> + 4 x 1mm <sup>2</sup>	14 bis 18 mm	10067220

### Description:

Motor connection plug  
Set consisting of

- Metal grommet housing, EMC with angled
- cable outlet
- EMC gland
- Insulating body for pin contacts
- 2x 4 crimp contacts



Cable structure (mm <sup>2</sup> )	Clamping range Cable gland	Part no.
4 x 1,5mm <sup>2</sup> + 4 x 0,75mm <sup>2</sup>	11 bis 15,5 mm 9 to 13 mm	10032001 10032002
4 x 2,5mm <sup>2</sup> + 4 x 0,75mm <sup>2</sup> 4 x 2,5mm <sup>2</sup> + 4 x 1mm <sup>2</sup>	11 bis 15,5 mm	10032011 10032012
4 x 4mm <sup>2</sup> + 4 x 1mm <sup>2</sup>	11 bis 15,5 mm 14 bis 18 mm	10032021 10032022

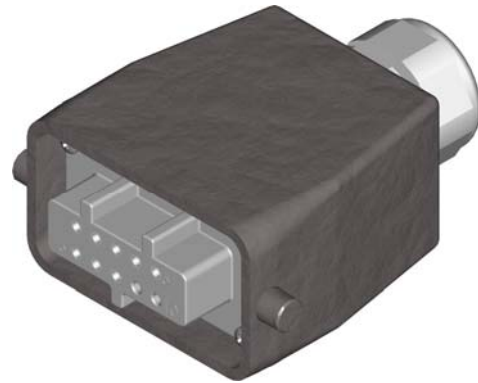
## 4.5 Connector set 10E straight outlet



### Description:

Motor connection plug with integrated star bridge  
Set consisting of

- Metal grommet housing, EMC with straight cable outlet
- EMC gland
- Insulating body for socket contacts
- Crimp contacts

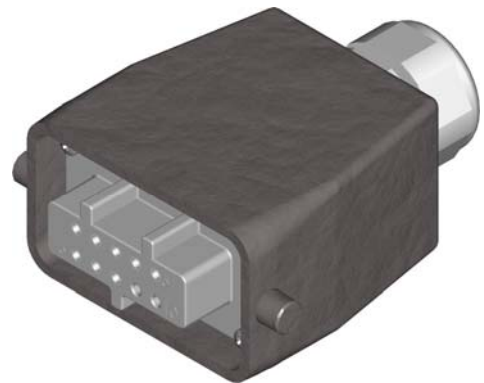


For Cable structure (mm <sup>2</sup> )	Clamping range Cable gland	Part no.
4 x 1,5mm <sup>2</sup> + 4 x 0,75mm <sup>2</sup>	11 – 20 mm	10019710
4 x 2,5mm <sup>2</sup> + 4 x 1mm <sup>2</sup>	11 – 20 mm	10019720
4 x 4mm <sup>2</sup> + 4 x 1mm <sup>2</sup>	11 – 20 mm	10019730

### Description:

Motor connection plug with integrated delta bridges  
Set consisting of

- Metal grommet housing, EMC with angled cable outlet
- EMC gland
- Insulating body for socket contacts
- Connection for L1, L2, L3:
- Insulation displacement connection: 4mm<sup>2</sup>
- Connection brake and thermistor:
- 4 crimp contacts 1 mm<sup>2</sup>



For Cable structure (mm <sup>2</sup> )	Clamping range Cable gland	Part no.
4 x 1,5mm <sup>2</sup> + 4 x 0,75mm <sup>2</sup>	11- 20 mm	10031900
4 x 2,5mm <sup>2</sup> + 4 x 1mm <sup>2</sup>		
4 x 4mm <sup>2</sup> + 4 x 1mm <sup>2</sup>	9 bis 16,5 mm	10031910

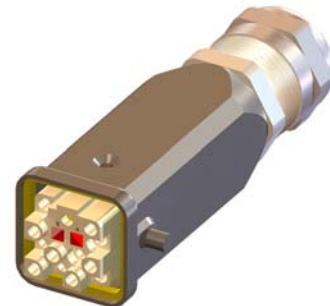
## 4.5 Connector set Q12 straight outlet



### Description:

Motor connection plug with integrated star bridge  
Set consisting of

- Metal grommet housing, EMC with straight cable outlet
- EMC gland
- Insulating body for socket contacts
- Crimp contacts

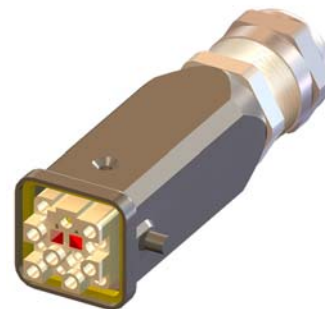


For Cable structure (mm <sup>2</sup> )	Clamping range Cable gland	Part no.
4 x 1,5mm <sup>2</sup> + 4 x 0,75mm <sup>2</sup>	5 bis 14 mm	10038420
4 x 2,5mm <sup>2</sup> + 4 x 1mm <sup>2</sup>	11,5 bis 15,5 mm	10038410

### Description:

Motor connection plug with integrated delta bridges  
Set consisting of

- Metal grommet housing, EMC with straight cable outlet
- EMC gland
- Insulating body for socket contacts
- Crimp contacts



For Cable structure (mm <sup>2</sup> )	Clamping range Cable gland	Part no.
4 x 1,5mm <sup>2</sup> + 4 x 0,75mm <sup>2</sup>	5 bis 14 mm	10038720
4 x 2,5mm <sup>2</sup> + 4 x 1mm <sup>2</sup>	11,5 bis 15,5 mm	10038710

# 5.1 Encoder cable M12 to M23 HTL, both-sided assembled

**Description:**

Encoder connection Cable structure  
Double-sided confection

Cable structure structure:

- Side1: M12 Connector A-coded shielded straight outlet
- Side2: M23 Female shielded straight outlet  
Code 0°

Pinbelegung:

M12 Connector to M23 Female


- 1 ----- 24V ----- 2 and 12
- 2 ----- A ----- 8
- 3 ----- 0V ----- 10 and 11
- 4 ----- B ----- 5
- 5



**Technical data:**

**For high end applications**

- Flame-retardant
- Silicone-free
- UV-resistant
- Oil-resistant
- Halogen-free
- Drag chain capable

Cable structure (mm <sup>2</sup> )	Cable length	Part no. . For high end applications	
		UL-listed components	UL-applications 
4 x 0,34 mm <sup>2</sup> shielded	1 m	70059220000100	70059270000100
	1,5 m	70059220000150	70059270000150
	3 m	70059220000300	70059270000300
	5 m	70059220000500	70059270000500
	7,5 m	70059220000750	70059270000750
	10 m	70059220001000	70059270001000
	15 m	70059220001500	70059270001500
Any length	7005922000xxxx	7005927000xxxx	

## 5.2 Connector M12



### Description:

Connector M12 4pin A-coded  
screw connection,  
connection cross-section 0.75 mm<sup>2</sup> max.  
Cable outlet axial,  
shielded

For the connection of HTL / SSI - encoder



Clamping range Cable gland	Part no.
5 bis 8 mm	30027630



## **Head office:**

KnorrTec  
Franz Knorr Technische Lösungen  
Kapellenbergstraße 34  
93176 Beratzhausen  
Tel.: (09493) 9 51 96 90  
Fax.: (09493) 9 51 96 79  
Email: [info@knorrtec.de](mailto:info@knorrtec.de)  
Web.: [www.knorrtec.de](http://www.knorrtec.de)

## **United States:**

PCC Germantown  
N114 W18770 Clinton Drive  
PO Box 130  
Germantown, WI 53022  
Tel.: 262-251-3000  
Fax.: 262-251-7334  
Email: [dan.carney@pccweb.com](mailto:dan.carney@pccweb.com)  
Web.: [www.pccweb.com](http://www.pccweb.com)

## **United Kingdom:**

Parmley Graham Limited  
South Shore Road  
Gateshead  
Tyne and Wear NE8 3AE  
Tel.: +44(0)191-478-6222  
Fax.: +44(0)191-543 8592  
Email: [gateshead@parmley-graham.co.uk](mailto:gateshead@parmley-graham.co.uk)  
Web.: [www.parmley-graham.co.uk](http://www.parmley-graham.co.uk)